



BRIXADI:

FDA Approved New
Long-Acting Buprenorphine
for Opioid Use Disorder

READ MORE



PsychiatryEducationForum.com/BRIXADI





Brixadi



● Indications

- How to Dose
- Injection Sites
- How to Switch?
- Discontinuation

●

- Common Adverse Reactions
- Warnings & Precautions

●

Use in Special Population

●

Drug Interactions

●

REMS Program



Harvinder Singh, MD |
Psychiatry Education Forum Academy

NO
DISCLOSURES



INDICATION:

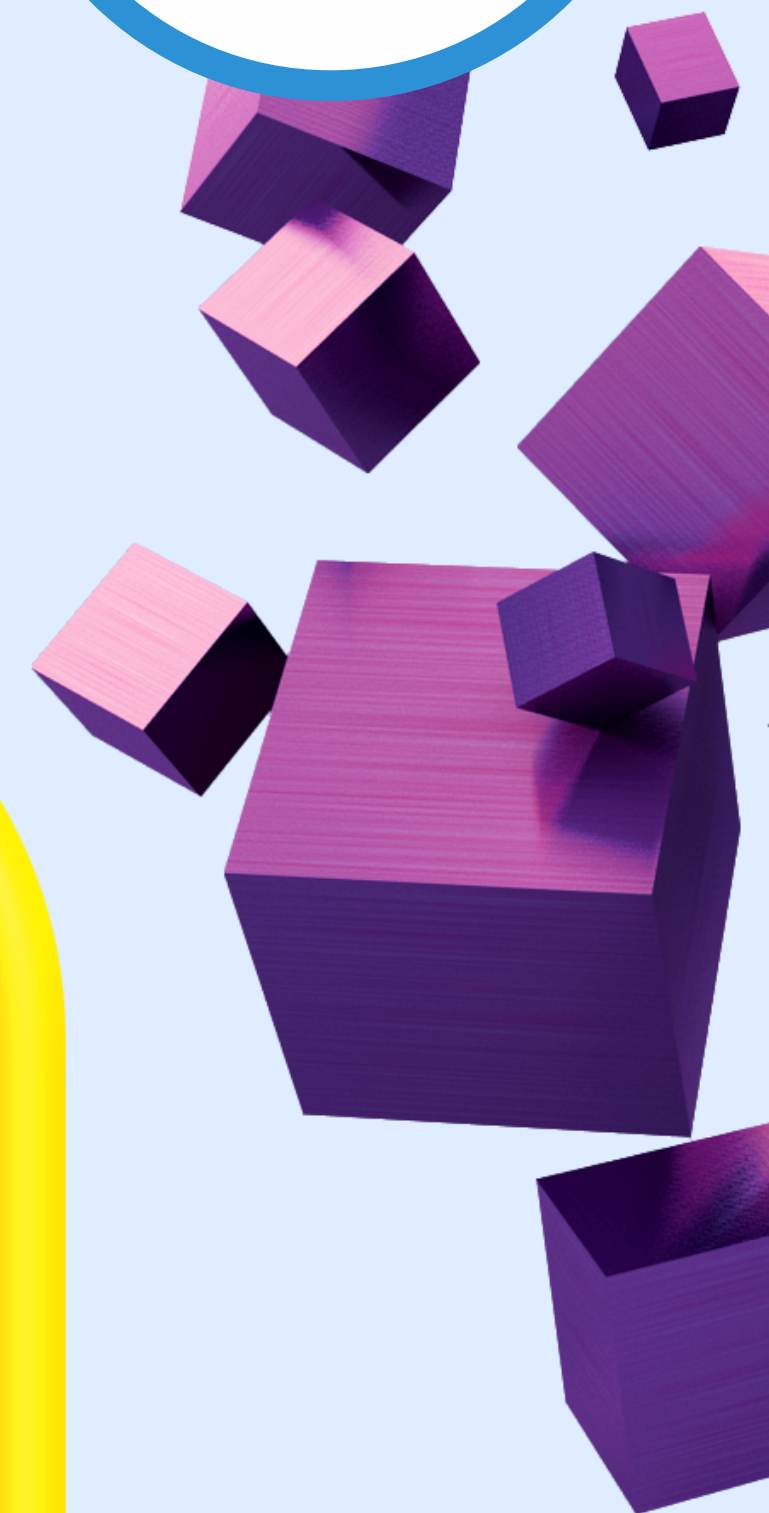


- Opioid Use Disorder (Moderate to Severe)

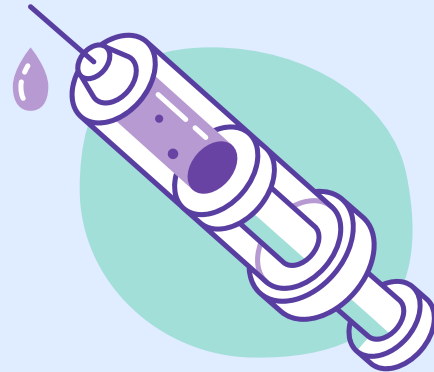


in patients who have initiated treatment with

- single dose of a transmucosal buprenorphine product or
- who are already being treated with buprenorphine



Brixadi: How to Dose?



1

WEEKLY

8 mg/0.16 mL

16 mg/0.32 mL

24 mg/0.48 mL

32 mg/0.64 mL

2

MONTHLY

64 mg/0.18 mL

96 mg/0.27 mL

128 mg/0.36 mL

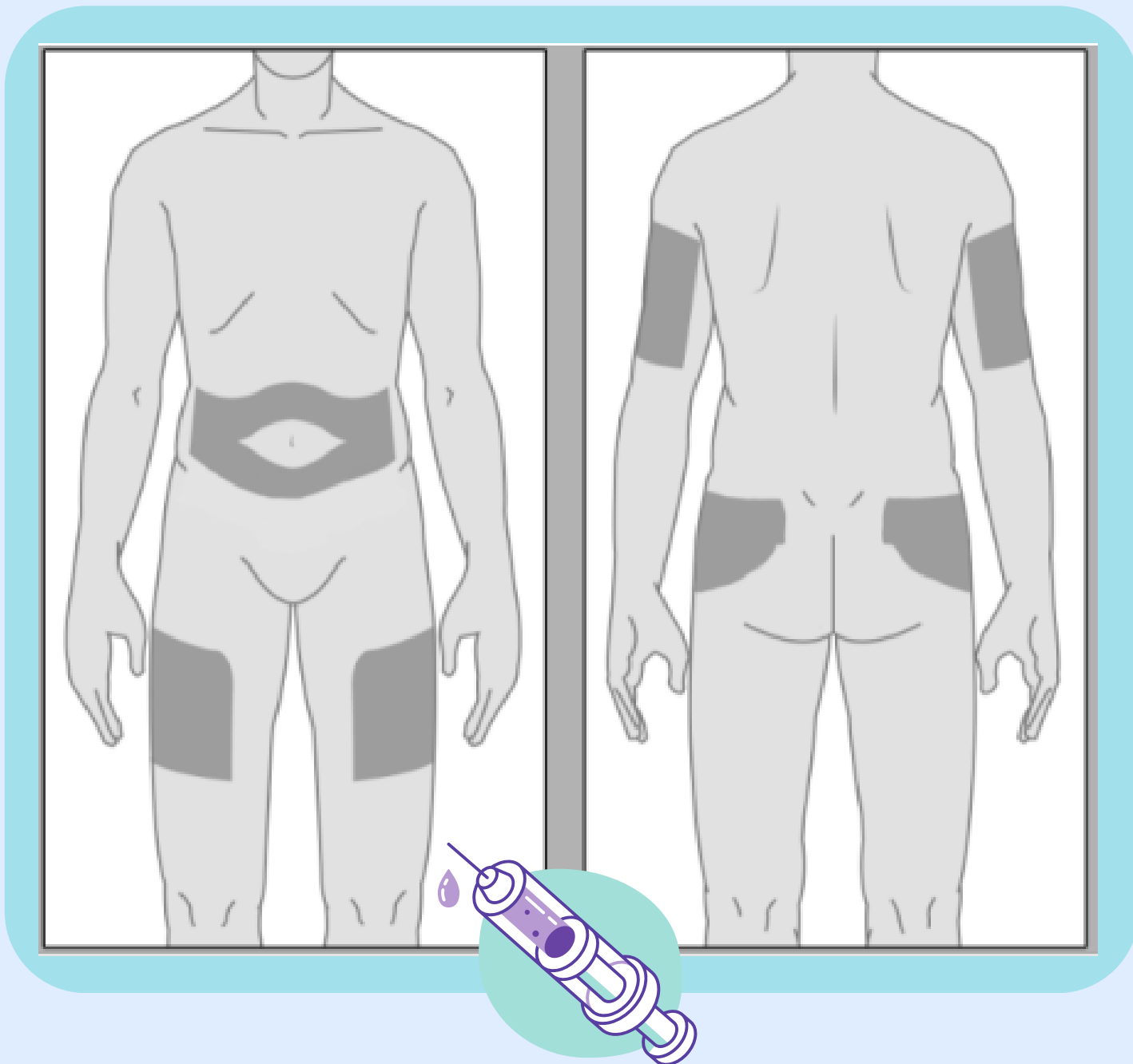
- Weekly doses cannot be combined to yield a monthly dose.
- Administer as a single injection. Do not divide.



**DO NOT ADMINISTER
INTRAVENOUSLY,
INTRAMUSCULARLY, OR
INTRADERMALLY**



Brixadi: Injection Site



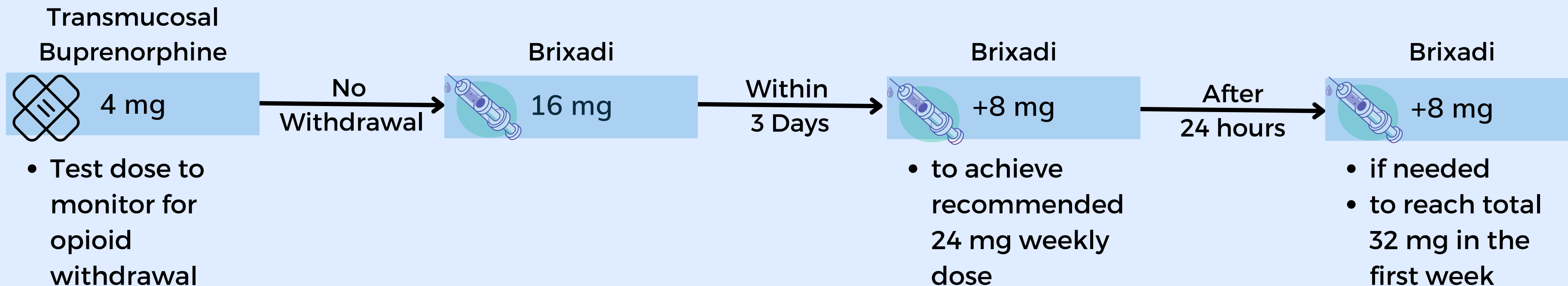
- **Administer:** subcutaneously slowly
- **Locations:** subcutaneous tissue of the buttock, thigh, abdomen, or upper arm.
- **Weekly Injections:** should **not** be administered to the same site of injection X at least 8 weeks
- **Monthly Injections:** No injection site rotation is required.

Brixadi: How to Dose?



NOT CURRENTLY RECEIVING BUPRENORPHINE TREATMENT

WEEK 1



Subsequent Weekly Injections:

- based on the total weekly dose established during Week 1
- Dosage adjustments can be made at weekly appointments
- maximum weekly dose: 32 mg

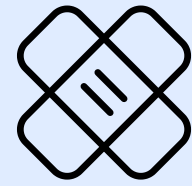
Monthly Brixadi is not intended for patients who are not currently receiving buprenorphine treatment.



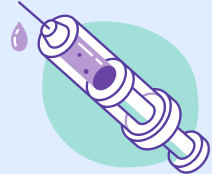
Brixadi: How to Dose?



SWITCHING FROM TRANSMUCOSAL BUPRENORPHINE TO BRIXADI



Transmucosal
Buprenorphine



Brixadi
(Weekly)



Brixadi
(Monthly)

≤ 6 mg	➤➤➤➤➤	8 mg	---
8-10 mg	➤➤➤➤➤	16 mg	64 mg
12-16 mg	➤➤➤➤➤	24 mg	96 mg
18-24 mg	➤➤➤➤➤	32 mg	128 mg

Switched directly
to either
weekly or
monthly Brixadi

Brixadi: How to Dose?



SWITCHING BETWEEN WEEKLY & MONTHLY BRIXADI

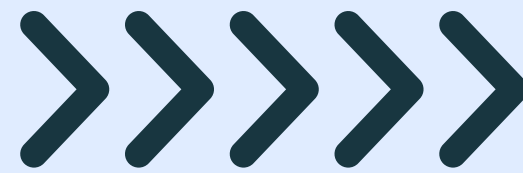


**Brixadi
(Weekly)**

16 mg

24 mg

32 mg



**Brixadi
(Monthly)**

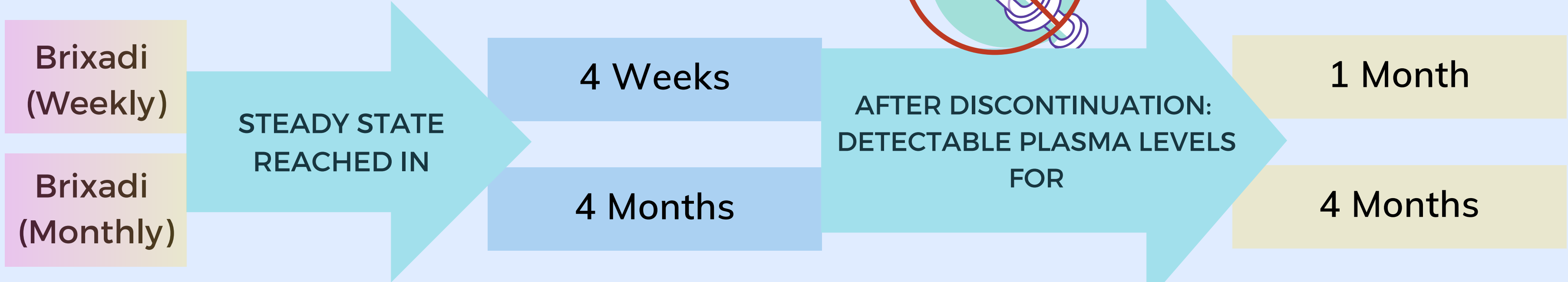
64 mg

96 mg

128 mg



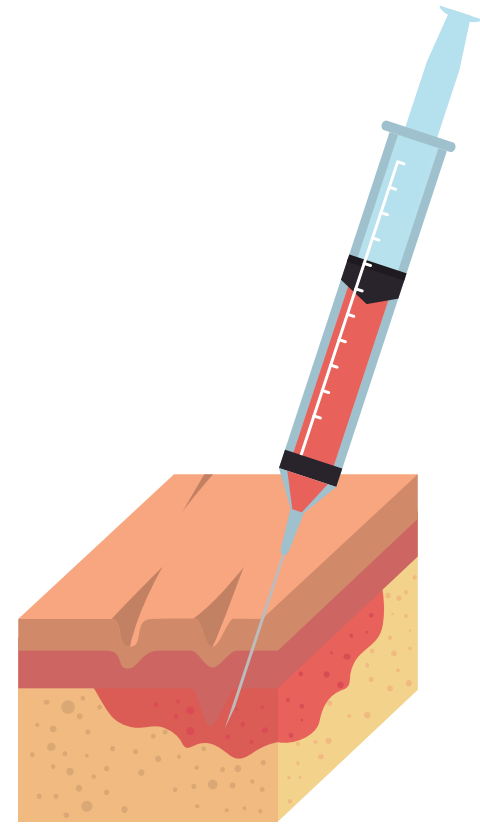
Brixadi: Discontinuation



Monitor for signs and symptoms of withdrawal for this duration & treat appropriate



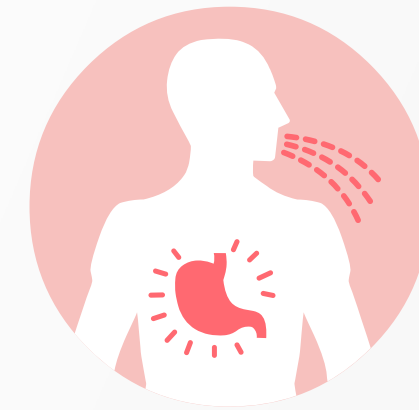
Brixadi: Common Side Effects



Injection Site Pain
Injection Site Erythema
Injection Site Pruritus



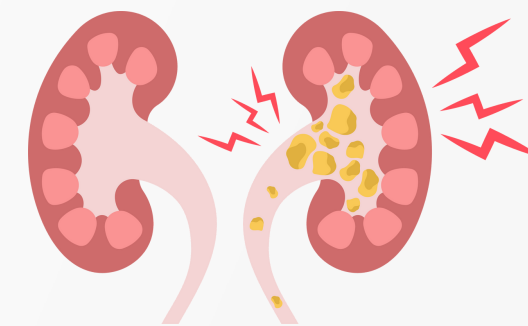
Constipation



Nausea



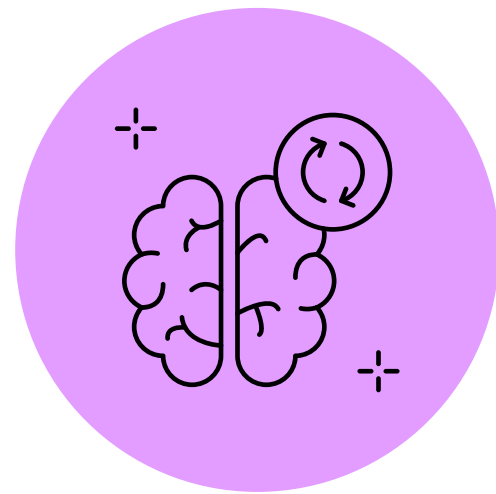
Headache



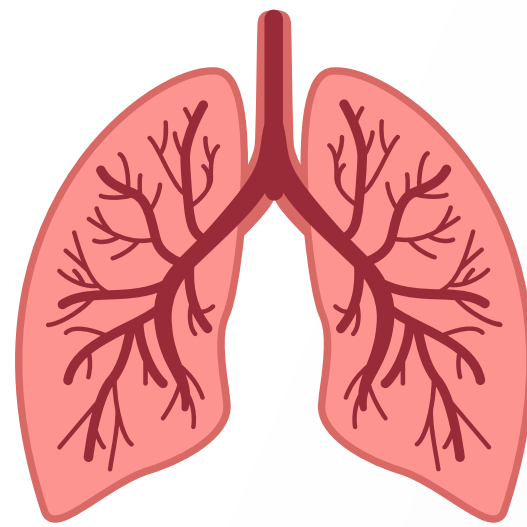
UTI



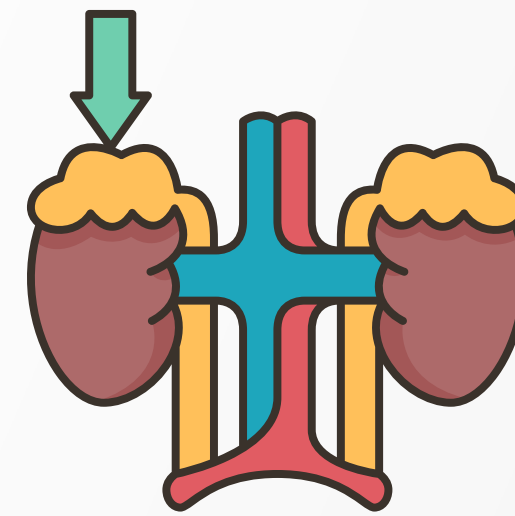
Brixadi: Warnings & Precautions



Addiction,
Abuse



Respiratory
Depression



Adrenal
Insufficiency



Hepatitis



Neonatal Opioid
Withdrawal Syndrome



BRIXADI: REMS PROGRAM



- **Certification:** Healthcare Settings and Pharmacies that order and dispense Brixadi must be certified in the BRIXADI REMS.
- **Dispense to Healthcare Providers Only:** Certified Healthcare Settings and Pharmacies must establish processes and procedures to verify BRIXADI is provided directly to a healthcare provider for administration by a healthcare provider, and the drug is not dispensed to the patient.
- Certified Healthcare Settings and Pharmacies must **not distribute, transfer, loan, or sell** BRIXADI.

www.BrixadiREMS.com

PSYCHIATRY EDUCATION FORUM'S

ACADEMY MEMBERSHIP

MOST UPDATED & UPGRADED VERSION OF EDUCATIONAL
ACTIVITY PROVIDED BY PSYCHIATRY EDUCATION FORUM



JOIN AT: [PSYCHIATRYEDUCATIONFORUM.COM](https://www.psychiatryeducationforum.com)